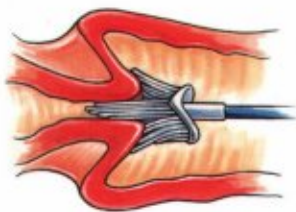


SUREPATH™

test pack

FOUR SIMPLE STEPS



1. Cervical Sample Collection
Insert the Rovers Cervex-Brush® into the endocervical canal. Apply gentle pressure until the bristles form against the cervix. Maintaining gentle pressure, hold the stem between the thumb and forefinger.

NOTE: ROTATE BRUSH FIVE TIMES

Rotate the brush five times in a clockwise direction.



2. Preserve the entire sample
Placing your thumb against the back of the brush pad, simply disconnect the entire brush from the stem into the SurePath™ preservative vial.



3. Cap and label vial
Place the cap on the vial and tighten. Label the vial and lab requisition form with patient name and/or number, physician name and date if desired.



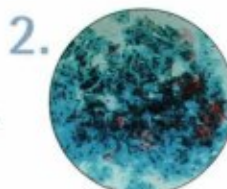
4. Send vial to your lab
Place the vial and requisition into a specimen bag and send to the laboratory.

ONE CLEAR RESULT

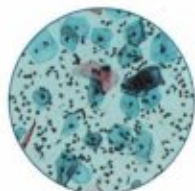
In clinical trial studies, cervical samples were taken and first smeared onto slides. Residual cells from the conventional smear were used in the PrepStain™ process. In each case, the same patient sample, with very different results.



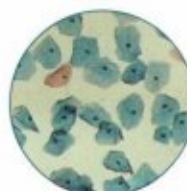
1. Conventional
Conventional smear, dense with blood, mucus, and inflammation is diagnosed as an unsatisfactory specimen, and the patient is called back in for another sample.



2. Conventional
The conventional smear, although diagnosed as "within normal limits" can be considered "limited" with the cells hidden by excessive cell clumping.



SurePath™ slide
The same sample was processed by PrepStain™, which eliminated the obscuring material for a sample easily diagnosed as "within normal limits."



SurePath™ slide
The same sample, using residual material from the smear and processed by the PrepStain™ allows for diagnosis with no questions or concern.



CERVEX-BRUSH™
is a registered trademark
of Rovers BV, OSS, Netherlands

TRIPATH™
care technologies™

TriPath Imaging, Inc.
780 Plantation Drive
Burlington, NC 27215 USA

PA-035 01/02
6200820701